

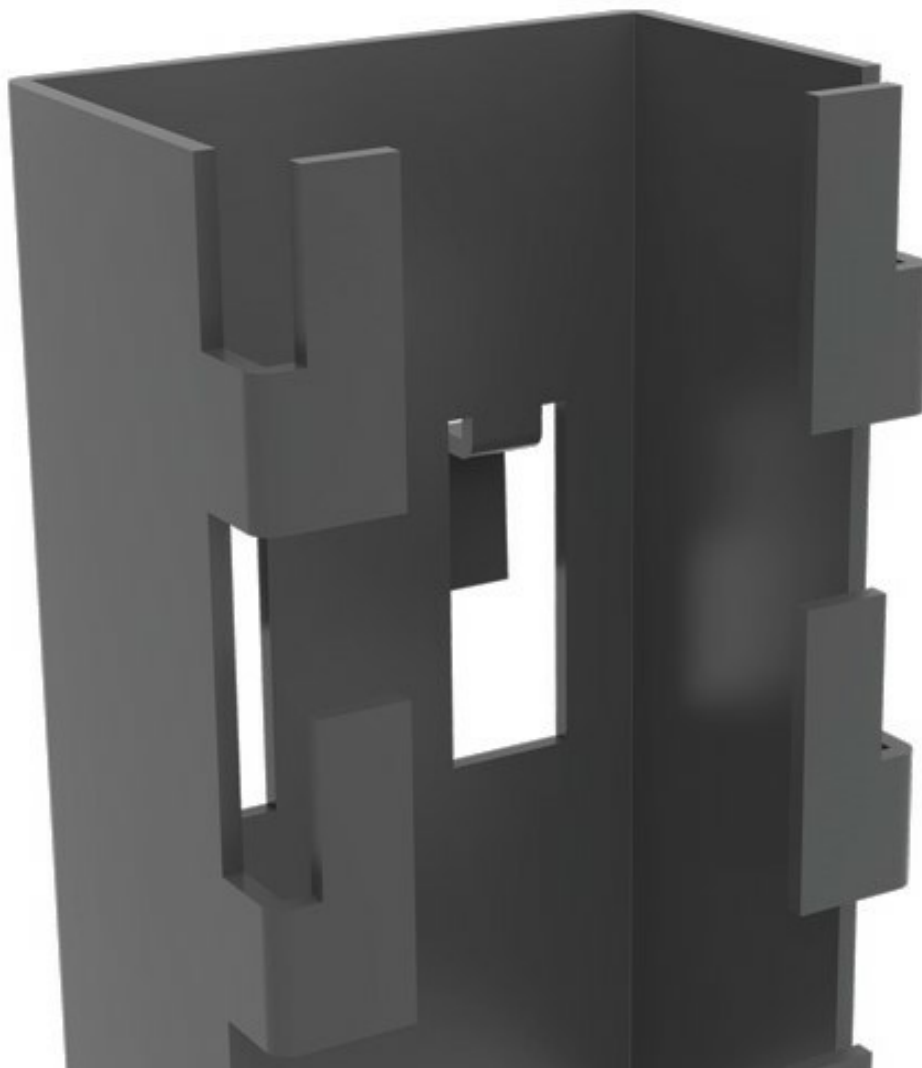


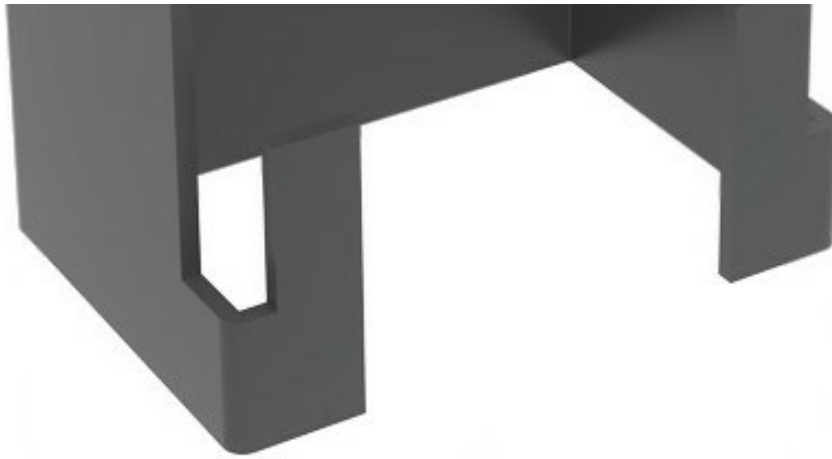
Est 1990

Mesh Panel Bracket

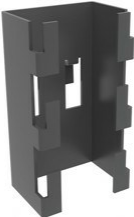

Axelent offers several mounting possibilities, of which Bracket Mounting, Top Mounting and Keyhole Mounting are the most common. All mountings are quick and easy to assemble.

The mesh panel bracket enables vertical cable runs through the middle of the mesh panels. Brackets, Pendants and X10 Brackets enable optional placement on machines, walls, ceilings and floors.





Models

ARTICLES / DESCRIPTION		SURFACE TREATMENT
	7700-084 Mesh Panel Mini Bracket	Black Zink
	7700-090 Mesh Panel Bracket	Black Zink